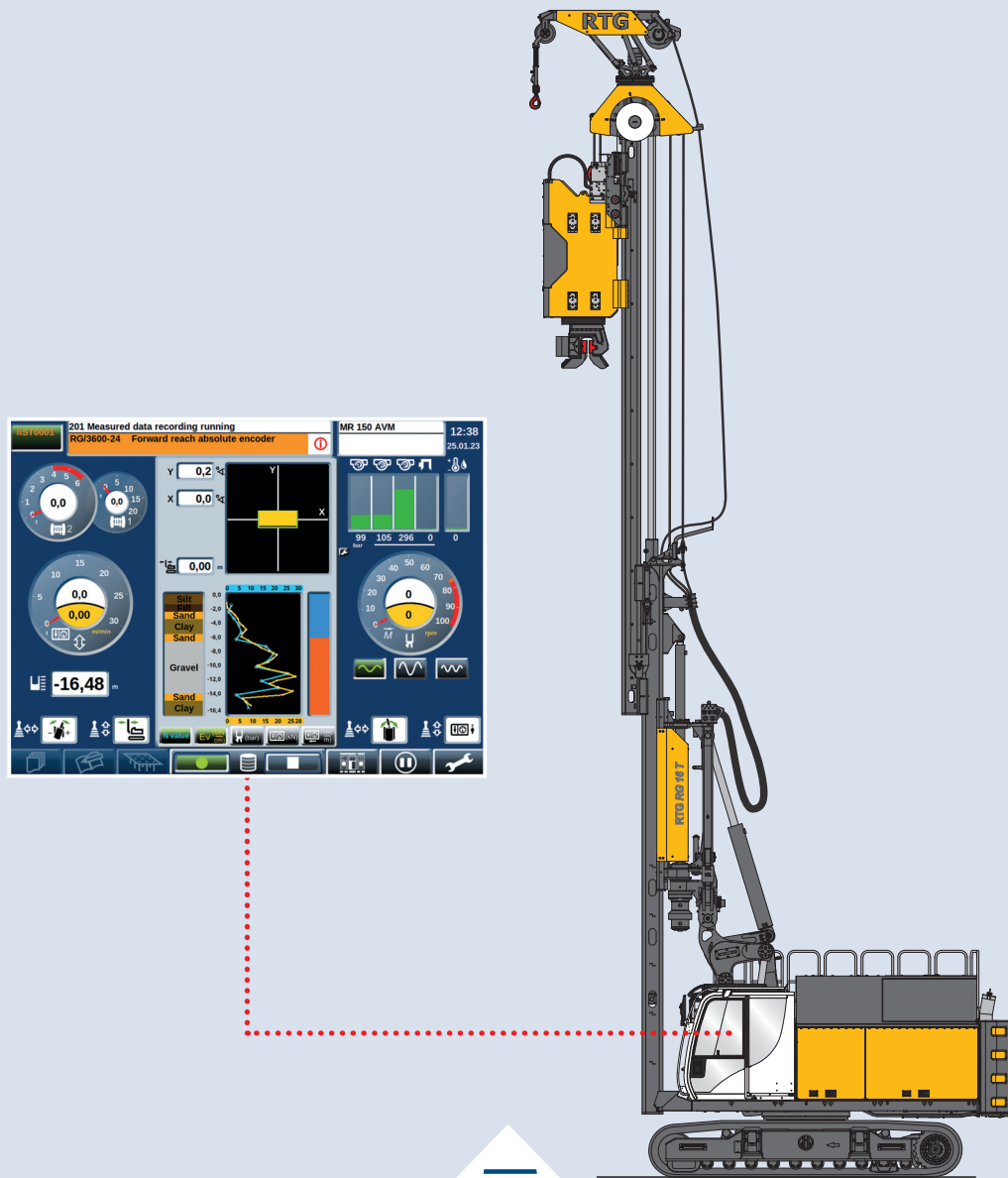


RTG-SCA

Soil Condition Assistant

RTG Rammtechnik

Energy-Efficient
PowerEEP



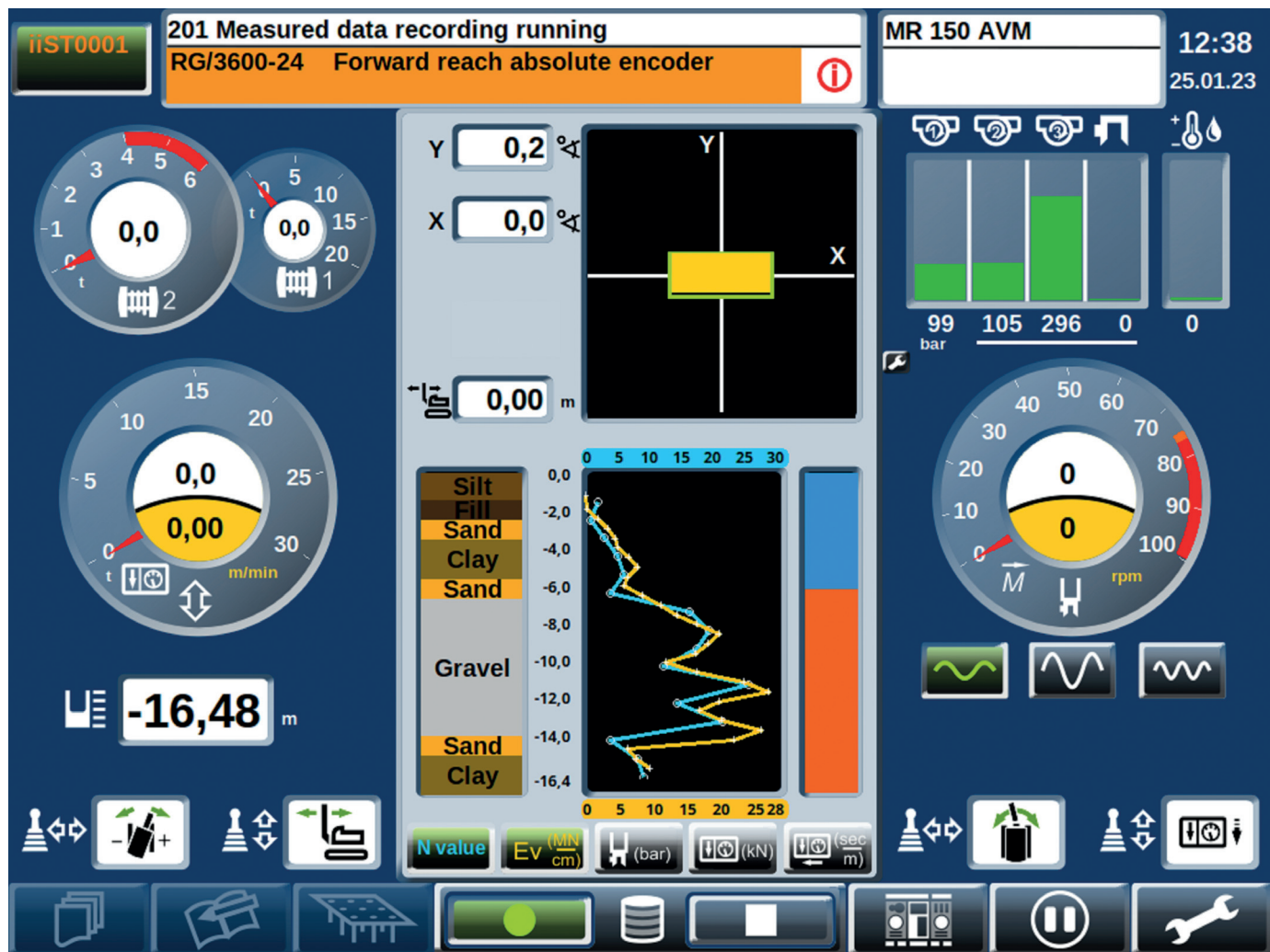
SCA – Soil Condition Assistant

Description

The SCA Soil Condition Assistant is a soil indication system to confirm the reaching of the bearing layers.

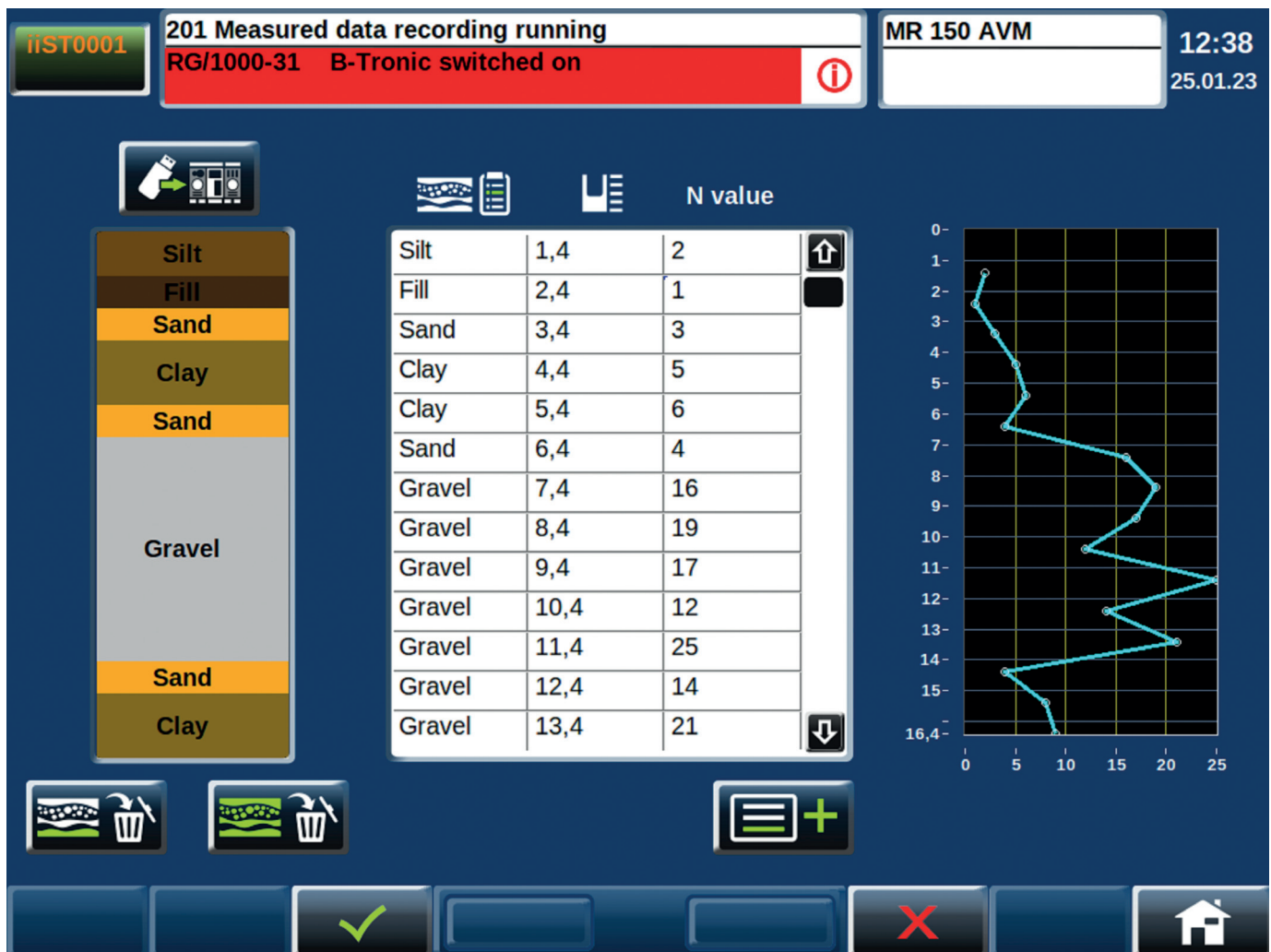
The information is displayed by overlapping N-value and EV-value graphs in a special window of the operating screen of the B-Tronic system.

The system can optionally be implemented in all RG piling rigs with vibrator attachment.



Spotlights

- Live recording of the penetration of different soil layers
- Transmission to the B-Tronic system
- Recording of the soil features during installation of the sheet piles
- Information when stable bearing layer has been reached and the sheet pile has been installed safely
- Indication of soil resistance
- B-report recording and data evaluation
- Live proof that sheet piles have completely, correctly and safely been installed
- Pre-setting of the system by implementing soil profile data



**International Service Hotline
+800 1000 1200***

**+49 8252 97-2888
BMA-Service@bauer.de**

*toll-free number, where available

24/7



RTG Rammtechnik



RTG
RAMMTECHNIK GMBH

The materials and specifications may be changed without prior announcement. The figures may contain optional equipment and do not show all possible configurations. These specifications and technical data are intended for information purposes. Errors and misprints are excepted.

**BAUER-Strasse 1
86529 Schrobenhausen
Germany
Tel.: +49 8252 97-0
rtg@bauer.de
www.rtg-rammtechnik.de**



905.953.2 1/2023